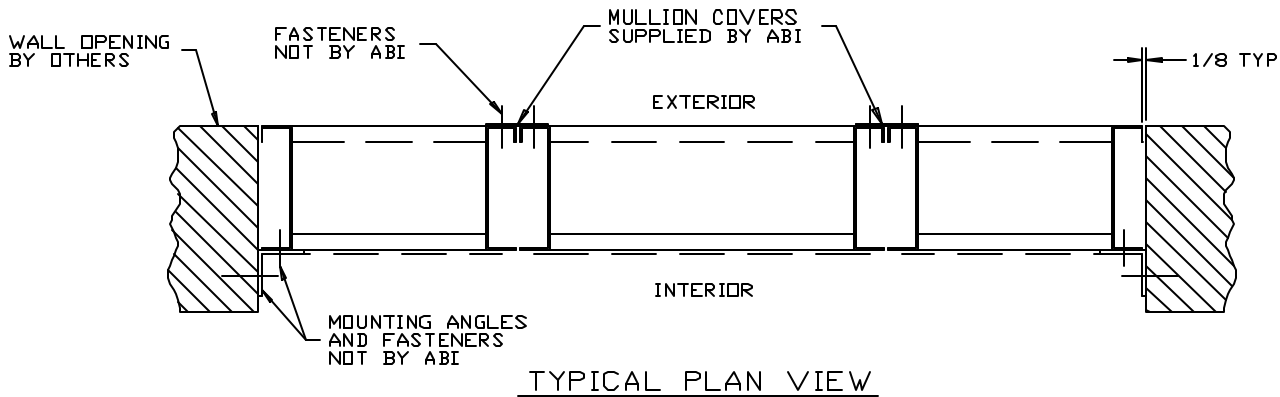


# INSTALLATION INSTRUCTIONS FOR STANDARD VERTICAL AND HORIZONTAL MULLIONS FOR FABRICATED LOUVERS

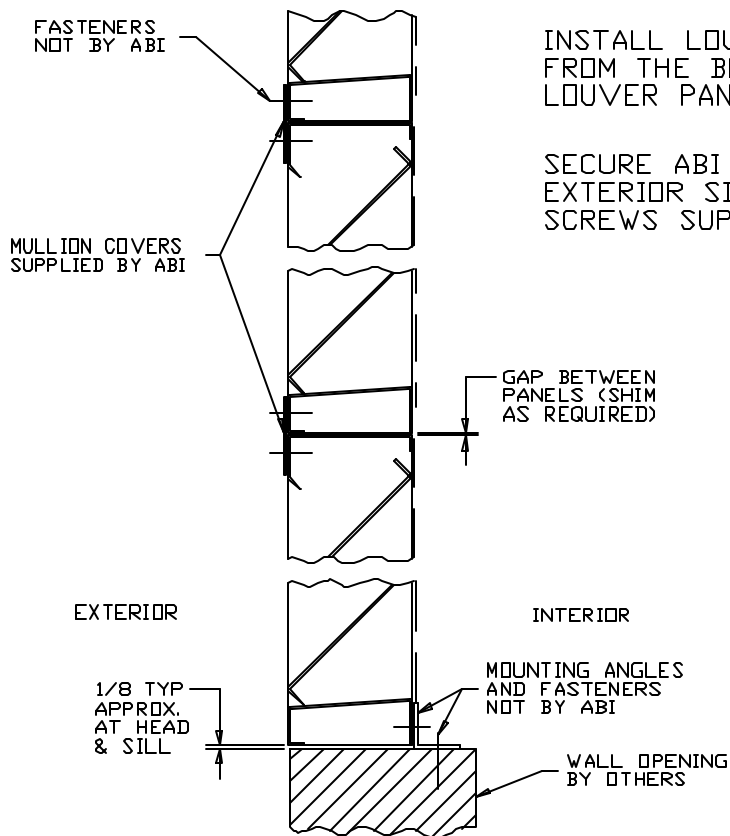
## MULTI-WIDE LOUVERS WITH VERTICAL MULLION COVER(S)



INSTALL LOUVER PANELS IN OPENING FROM LEFT TO RIGHT AS VIEWED FROM INTERIOR OF OPENING AND SECURE TO OPENING.

SECURE ABI SUPPLIED MULLION COVERS TO EXTERIOR SIDE ONLY, WITH SHEET METAL SCREWS SUPPLIED BY OTHERS IN FIELD.

## MULTI-HIGH LOUVERS WITH HORIZONTAL MULLION COVER(S)



INSTALL LOUVER PANELS IN OPENING STARTING FROM THE BOTTOM TO TOP OF OPENING, SECURING LOUVER PANELS TO OPENING AS THEY ARE INSTALLED.

SECURE ABI SUPPLIED MULLION COVERS TO EXTERIOR SIDE ONLY, WITH SHEET METAL SCREWS SUPPLIED BY OTHERS IN FIELD.

OPENINGS THAT REQUIRE MULTIPLE LOUVER PANELS IN BOTH WIDTH AND HEIGHT WILL REQUIRE INTERNAL STRUCTURAL SUPPORTS. IT IS RECOMMENDED THAT LARGE OPENINGS BE DIVIDED WITH STRUCTURAL MEMBERS SO THAT THE LOUVERS WILL SPAN EITHER WIDTH OR HEIGHT WITH A SINGLE PANEL. UNUSUALLY HIGH WIND LOADING MAY REQUIRE STRUCTURAL SUPPORTS ON NON-MULTIPLE WIDE AND MULTIPLE HIGH ASSEMBLIES. STRUCTURAL SUPPORTS AND MOUNTING ACCESSORIES ARE NOT SUPPLIED AS A STANDARD.

**abi**® air balance inc.

A MESTEK COMPANY

7301 INTERNATIONAL DRIVE HOLLAND, OHIO

FABRICATED LOUVER MULLION  
INSTALLATION INSTRUCTIONS

DRN. BY JTS

DWG. NO.

REV.

DATE 7-22-93

23799-1-ABI