

# ELEGANCE

## Submittal Data

Anodized Aluminum  
Baseboard Radiation

**ENCLOSURE ASSEMBLY:**

The entire enclosure assembly components are made of heavy gauge extruded 6063T5 clear anodized aluminum.

**FINISH:**

All enclosures and accessories are supplied in a durable white powder coated finish.

**BACKPLATE:**

The backplate is designed to provide the basic backbone to the entire assembly. Its form is extruded, providing a minimum thickness of 10-gauge (.100) throughout. Incorporated in its design are alignment slots that will receive lock-pins which will interlock with the adjoining piece of backplate or terminating end cap and/or 90° inside corner accessory. The backplate also provides mounting tracks in which the element/face plate support brackets locate and interlock.

**BRACKETS:**

The brackets are designed to integrate with the backplate and support the element while providing a pressure lock fit with the face plate. The bracket extrusion maintains a minimum thickness of 8-gauge (.125).

**FRONTS:**

The extruded insert front is designed to maintain a minimum thickness of 10-gauge (.100). Its design provides a pressure lock along the length of the backplate mounted brackets.

**ELEMENT:**

The copper tube aluminum finned element is mechanically expanded to provide maximum fin contact. The aluminum fin is of full collared design so that consistent spacing is provided along with maximum heat transfer. The copper tube will be 1/2" nominal O.D. The aluminum fins shall be 1-11/16" x 1-31/32 x .009" thick. There are 64 fins per foot. The fin will have air turbulence impressions over the vertical stiffening edges on the front and back.

**FEATURES AND BENEFITS:**

- Made of rustproof, corrosion resistant extruded aluminum
- Durable white powder coated finish
- Durable 10-GA. cover, with 8-GA. brackets
- Die cast aluminum accessories with locking pins for secure fit

<u>Description</u>	<u>Model Number</u>	<u>Quantity</u>
Complete with 1/2" Element	<input type="checkbox"/> D-500-*	2' _____ 3' _____ 4' _____ 5' _____ 6' _____ 7' _____ 8' _____
	<i>*to be replaced by length of board/element needed</i>	Total Footage _____
Enclosure Only	<input type="checkbox"/> D-*	2' _____ 3' _____ 4' _____ 5' _____ 6' _____ 7' _____ 8' _____
	<i>*to be replaced by length of board/element needed</i>	Total Footage _____
Enclosure Only	<input type="checkbox"/> DE-*	2' _____ 3' _____ 4' _____ 5' _____ 6' _____ 7' _____ 8' _____
	<i>*to be replaced by length of board/element needed</i>	Total Footage _____



260 North Elm St., Westfield, MA 01085  
 (413) 564-5545 Fax: (413) 572-3764  
 7555 Tranmere Drive, Mississauga, ONT. L5S 1L4 Canada  
 (905) 670-5888 Fax: (905) 670-5782  
 www.designlineonline.com



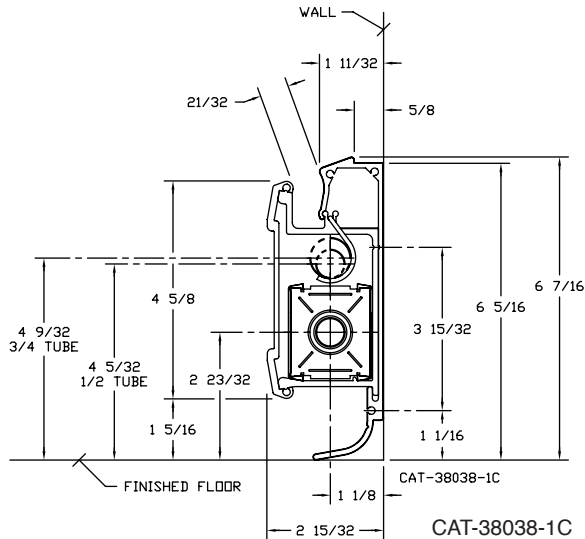
PROJECT: \_\_\_\_\_ DATE: \_\_\_\_\_  
 LOCATION: \_\_\_\_\_  
 CUSTOMER: \_\_\_\_\_  
 ENGINEER: \_\_\_\_\_  
 SUBMITTED BY: \_\_\_\_\_  
 FOR:  Reference  Approval  Construction  
 UNIT DESIGNATION: \_\_\_\_\_  
 SCHEDULE NUMBER: \_\_\_\_\_

# ELEGANCE

## Submittal Data

Anodized Aluminum  
Baseboard Radiation

### DIMENSIONAL DATA



### RATINGS

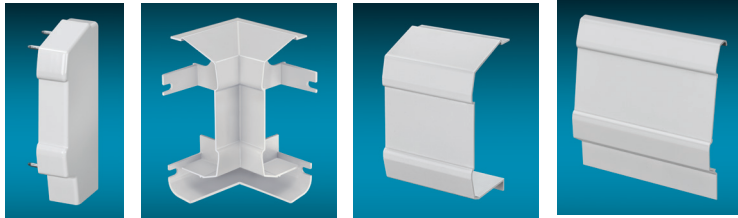
DL-500 Assembled with 1/2" Element

GPM	Average Hot Water Temperature - BTU/HR./LIN. FT.						
	120°F	130°F	140°F	150°F	160°F	170°F	180°F
4	149	186	227	270	320	370	420
1	143	179	218	260	300	350	400

#### RATING AND PRESSURE DROPS AT VARIOUS FLOW RATES

GPM	1.0	1.5	2.0	2.5	3.0
Lb. per Hr.	500	750	1,000	1,250	1,500
Factor to obtain rating at given flow	1,000	1,016	1,028	1,038	1,045
DL-500 Element - P.D. Millinches Per Ft.	260	520	850	1,270	1,730

### ACCESSORIES



End Cap

Inside Corner

Wall Trim

Wall Trim to Floor

#### SPECIFY QUANTITIES:

<u>Description</u>	<u>Master Carton Qty.</u>	<u>Part Number</u>	<u>Quantity</u>
End Cap - LH	1	□ D-EL	_____
End Cap - RH	1	□ D-ER	_____
Inside Corner - 90°	1	□ D-IC	_____
Wall Trim - 2"	1	□ D-WT2	_____
Wall Trim - 4"	1	□ D-WT4	_____
Wall Trim to Floor - 4"	1	□ D-WTF4	_____
Wall Trim to Floor - 6"	1	□ D-WTF6	_____
Access Panel - 4"	1	□ D-AP4	_____
Access Panel - 6"	1	□ D-AP6	_____
Return Pipe Hangers	1	□ D-PH	_____

Outside and Special Angle Corners - Consult Factory