

Radiant Floor Heating System

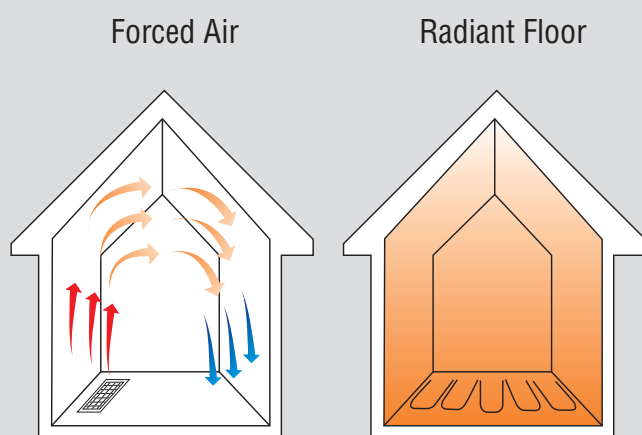
The Ultimate In Radiant Heat.

The concept of radiant heat is simple. Embassy's flexible, cross-linked polyethylene (PEX) tubing is installed in the floor, wall or ceiling. Heated water is then circulated throughout this tubing network, transforming the surface area into a warm radiator. The result is truly remarkable. Radiant heat warms people and objects, not air, so you experience a warmth similar to that of the sun's rays. You are surrounded with even, consistent heat from floor to ceiling. Radiant heat offers you several distinct advantages over forced-air systems:

- Radiant heat stays near the floor, providing barefoot comfort on even the coldest of winter days.
- Radiant heat is consistent and even.
- Radiant heat is ideal for interior decorating because there are no forced-air vents to consider when designing rooms.
- Radiant heat offers customized comfort levels and settings.
- Radiant heat is quiet, clean and dust-free.

With its superior technological design and high quality components, your Embassy radiant heating system is sure to provide you with efficient, reliable and comfortable heating for years to come.

Heat Distribution Comparison



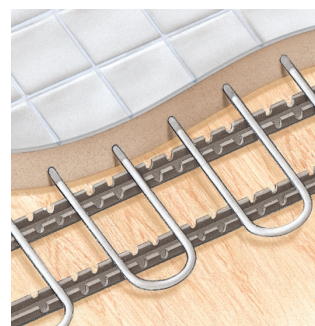
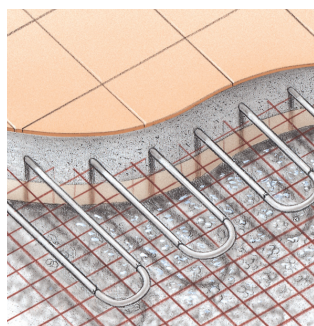
Unlike forced-air systems, radiant heat stays near the floor, not the ceiling, creating an even, consistent heat.

Flexibility Is The Key

Embassy's PEX tubing is designed to fit anywhere you need heating, regardless of the configuration of your room or area. Our unique support plates and channels simplify installation while saving you time and money.

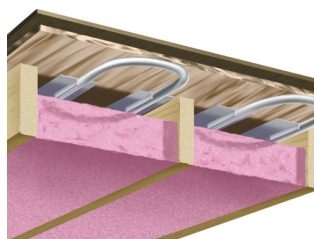
In The Floor...

In basement or slab floors, the tubing is encased in cement. In suspended floors, the tubing is secured by our unique tube support channels and encased in a lightweight cement pour. The tubing can also be installed either above the subfloor, using metal snap plates, or under the floor, using our specially designed support plates.



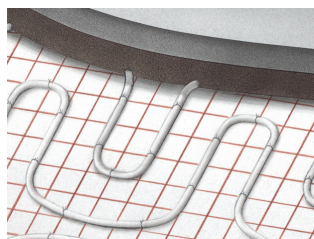
Under The Floor...

The tubing can be affixed to the bottom of a subfloor between floor joists to heat the room above. Using Embassy's exclusive extruded snap plates, peak performance is assured. For less demanding requirements the tubing can be affixed to the subfloor using custom-fitted staples and/or reflector snap plates.



In the Driveway or Walkway...

When installed outdoors, radiant heat offers you unparalleled convenience and safety. Radiant heat is ideal for melting ice and snow in driveways, sidewalks, ramps and parking areas for residential, commercial or industrial applications.



Embassy Has The Features You Want.

We designed our radiant system with cutting edge features to offer the most efficient, reliable and advanced radiant heating system available today. With our unique manifold and complete line of system components and controls, Embassy's radiant system offers the ultimate in customized comfort.....and installation and servicing couldn't be easier.

Our Exclusive Manifold

At the heart of our system is our unique manifold with its exclusive flow-rate indicator. Because the actual flow of water in our radiant system is visible, it's easy to adjust the flow-rate to each zone for maximum comfort and efficiency. Additional manifold sections may be added to our system to accommodate future expansion should the need arise.

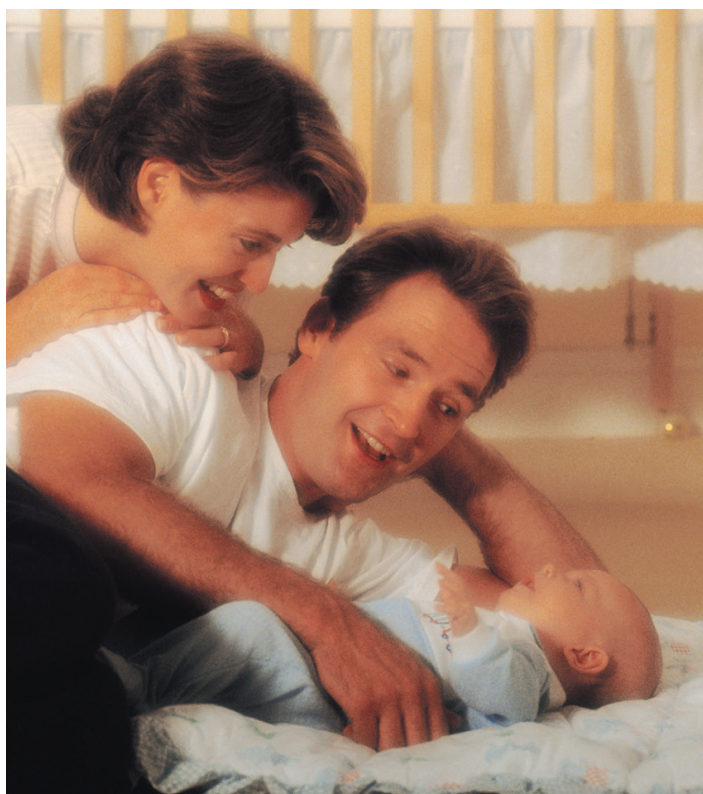


Our Cross-Linked PEX Tubing Ensures System Integrity

The reliability and unsurpassed performance of cross-linked PEX tubing make it an integral part of our radiant system. Our PEX tubing is subjected to the industry's most stringent tests. In addition, it is manufactured in accordance with ASTM specifications and meets internationally accepted DIN standards.

50 Years of Experience You Can Trust

Embassy's team of engineers and designers have 50 years of experience in producing superior hydronic baseboard heating systems. Now we've put that knowledge to work in creating the best radiant heating system on the market today. Embassy's radiant system will deliver efficient, comfortable heat for years to come. Put Embassy's heating expertise to work for you.



Comfort Track™

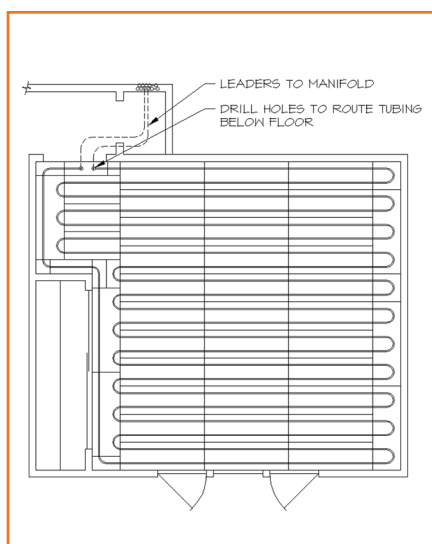
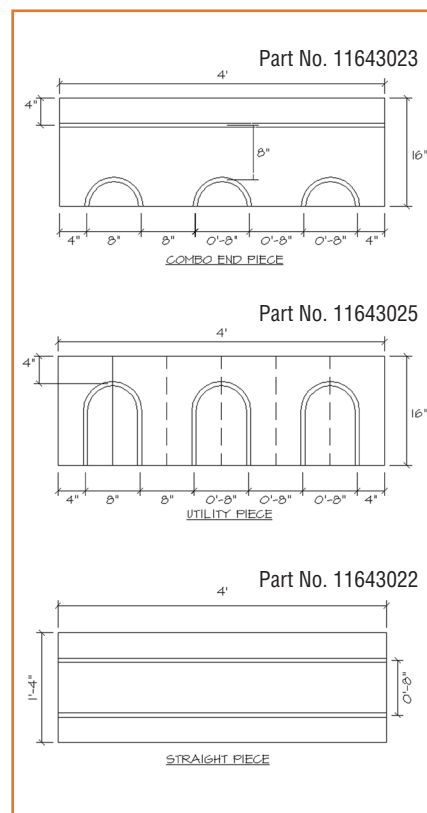
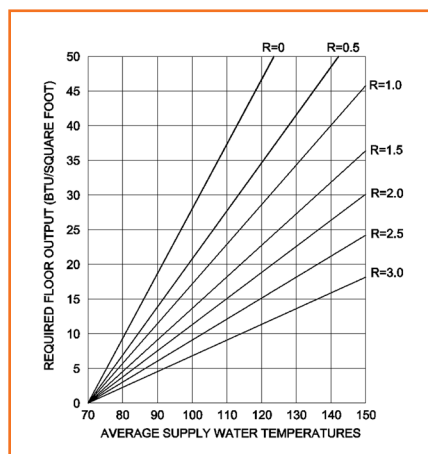
Features

- **Standard Tubing Size**
- Accommodates standard tubing with a 3/8" inside diameter (1/2" O.D.).
- **Fast Response Time**
- Significantly more responsive than gypsum based concrete.
- **Low Profile (5/8")**
- Reduces floor transition and height problems.
- **Cost/Time Efficient**
- Eliminates costly scheduling problems of separate subcontractors and time required for concrete curing.
- **Lightweight**
- At 2.5 lbs/square foot Comfort Track™ is at least six times lighter than any concrete mixture, avoiding costly structural reinforcement.

Comfort Track™ is a modular radiant flooring system that is composed of medium density composite wood, covered with an aluminum adhesive. The aluminum accelerates the heat transfer from the tubing to the flooring. The boards can accept Embassy's 3/8" Liquipex™ tubing, as well as any 3/8" PEX tubing that is manufactured to ASTM F876. Each board is grooved, which keeps the PEX tubing securely in place. This "tight fit" ensures excellent and rapid thermal transfer to the finished floor.

Comfort Track can be applied right before the installation of the finished flooring. The panels are glued and/or screwed to the subfloor in a pattern determined by the designer or installer. Embassy's 3/8" Liquipex™ tubing is then snapped into the grooves flush with the top surface of the panels. Refer to the Comfort Track installation manual for further information.

Models



A comfortable, even heat is achieved due to the density of the panels and rapid heat acceleration from the aluminum laminate layer. The Comfort Track™ paneling system delivers uniform, consistent heat with ease of control.

