

The BACnet HeatNet Bridge ships with the following default settings:

Setting	Default Value
MAC Address	11
Device Address	11
Baud Rate (MSTP)	38400
UDP Port (IP)	47808

If necessary, the values can be changed to meet specific application requirements by following the steps below. Do not change any settings not specifically listed in this document or the bridge may no longer function properly.

- 1) Connect a computer to the ProtoCessor using the RUINET application. For instructions on connecting a computer to the ProtoCessor, see the document: *“Connecting a computer to the HeatNet™ Bridge”*. You should see the RUINET Main Menu as shown in Figure 1.

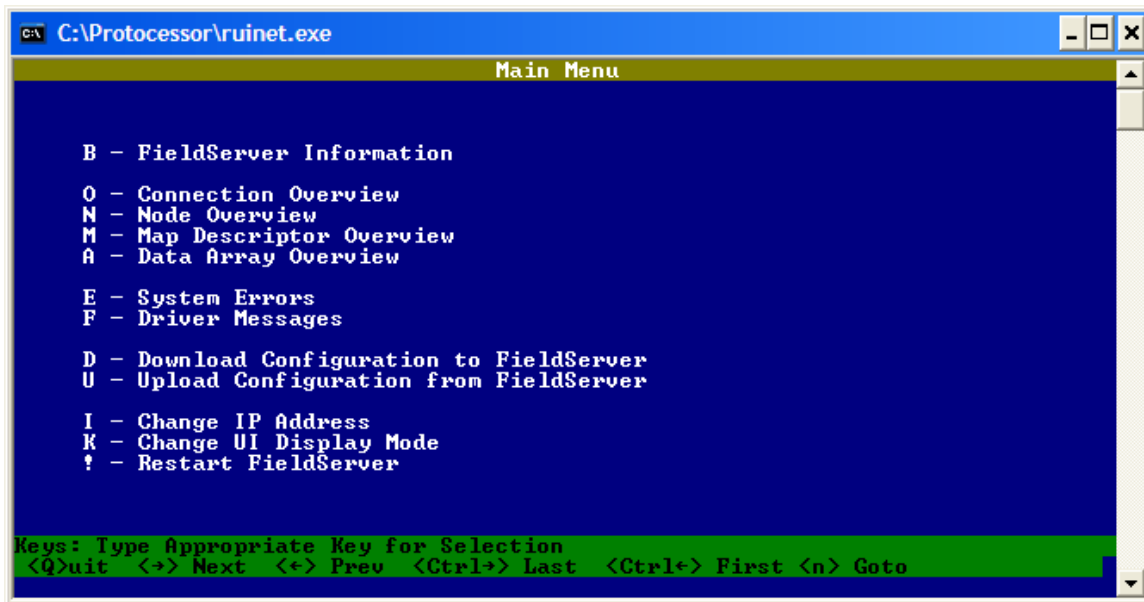


Figure 1 – RUINET Main Menu

- 2) Press the 'U' key to choose (U)pload Configuration (see Figure 2). Press 'U' again to begin the upload. This uploads the ProtoCessor configuration file (*config.csv*) to the computer from the ProtoCessor. When the upload is complete (see Figure 3), press 'N' to choose (N)otepad. This will open the configuration file in NotePad for editing. Other basic text editors can be used, but the file is already formatted for use in NotePad. **DO NOT EDIT THE FILE WITH EXCEL, IT WILL ADD EXTRA FORMATING AND CORRUPT THE FILE.**

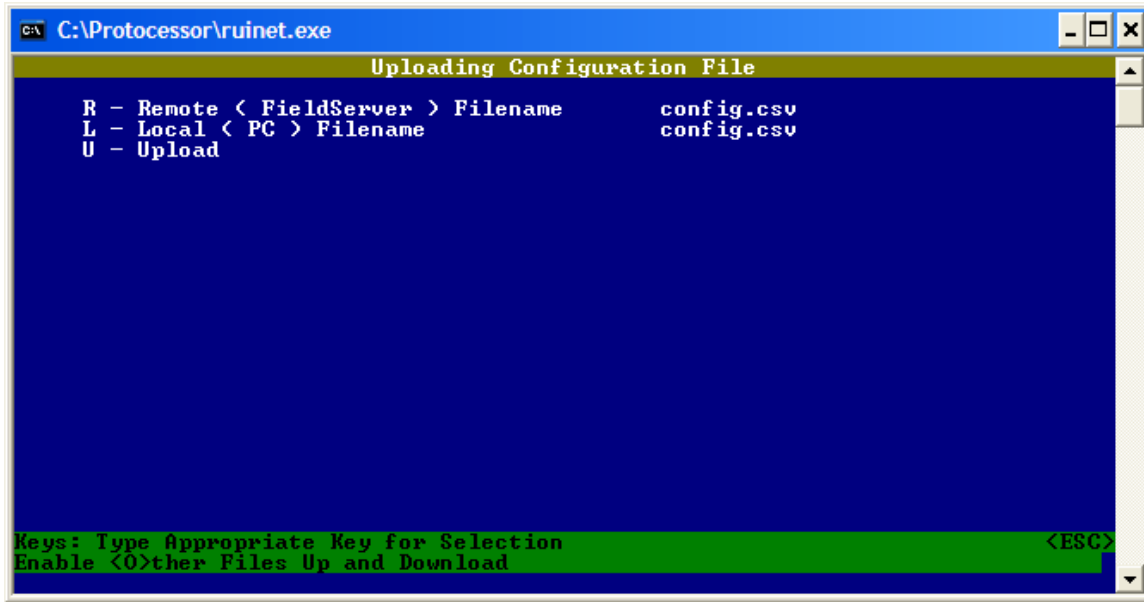


Figure 2. RUINET - Upload Screen

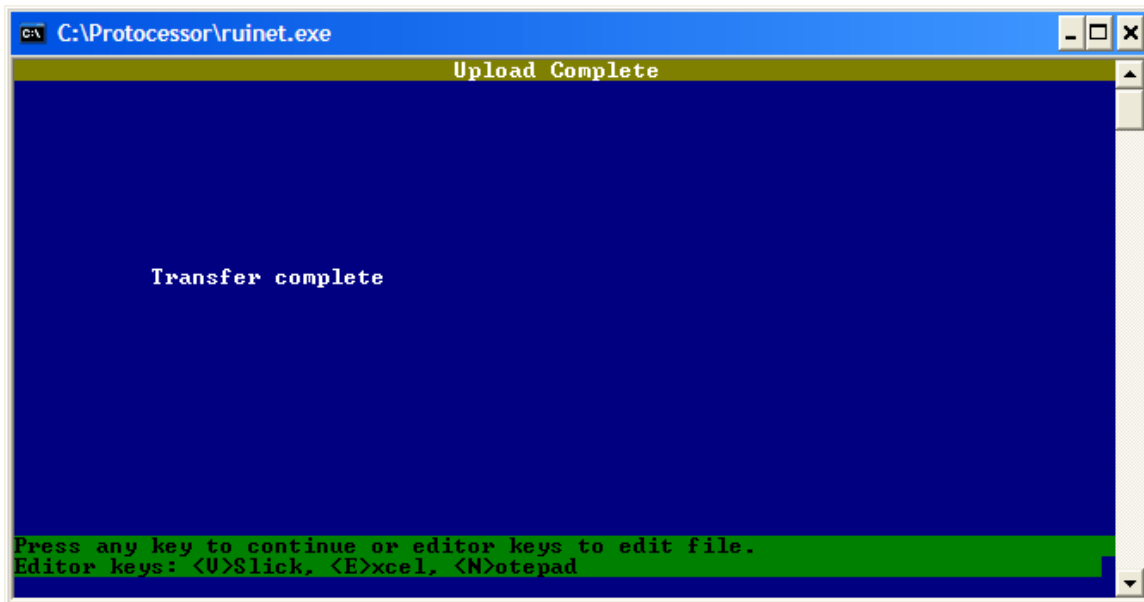


Figure 3. RUINET - Upload Complete Screen

- 3) To change the MAC Address, find the section titled “Common Information” (see Figure 4) and change the System_Node_ID field as needed. It can be changed any value from 1 to 254.

```
//=====
//
// Common Information
//
// Title is the Bridge Name on the Network. It should be changed only if
// necessary.
//
// System_Node_Id is the BACnet MAC Address. It can be changed to meet
// specific application needs. Factory default value is 11.
//
Bridge,
Title                               ,System_Node_Id
KNSX-BACnet MSTP v2.00              ,11
```

Figure 4 - NotePad – Changing the MAC Address.

- 4) To change the UDP Port, find the section titled “Server Side Nodes” (see Figure 5) and change the IP_Port field as needed. It can be changed to any value between 1 and 65535. Do no change any other field in this section.

```
//=====
//
// Server Side Connections
//
// Adapter: DO NOT CHANGE
// Protocol: DO NOT CHANGE
//
// IP_Port: 1 - 65535 (Factory Default = 47808 = BAC0)
// The IP Port Number. It can be changed to meet specific application needs.
//
Connections
Adapter      ,Protocol      ,IP_Port
N1           ,Bacnet_IP     ,47808
```

Figure 5 - Changing the UDP Port

- 5) To change the Device Address, find the section titled “Server Side Nodes” (see Figure 6) and change the Node_ID field as needed. It can be changed to any value between 1 and 4294967295. Please note that the protocol field might be Bacnet_IP on your specific bridge, do not change it.

```
//-----  
// Server Side Nodes  
// The Node_Id is the BACnet Device Address. It can be changed to meet  
// specific application needs. Factory default value is 11.  
// !!!!! DO NOT CHANGE NODE_NAME OR PROTOCOL !!!!!  
//  
Nodes  
Node_Name      ,Node_ID      ,Protocol  
KNSX           ,11           ,Bacnet_MSTP
```

Figure 6. NotePad - Changing the Device Address

- 6) To change the Baud Rate (BACnet MSTP only), find the section titled “Server Side Connections” (see Figure 7) and change the Baud field as needed. It can be changed to 9600, 19200, or 38400. Please note that the protocol field might be Bacnet_IP on your specific bridge, do not change it.

```
//-----  
// Server Side Connections  
// Baud is the BACnet baud rate. It can be changed to 9600, 19200, or 38400 to  
// meet specific application needs. Factory default value is 38400.  
// !!!!! DO NOT CHANGE PORT OR PROTOCOL !!!!!  
//  
Connections  
Port      ,Baud      ,Protocol  
R1        ,38400     ,Bacnet_MSTP
```

Figure 7. NotePad - Changing the Baud Rate

- 7) Save all changes and exit by choosing ‘Save’, then ‘Exit’ from the File Menu.
- 8) Back in RUINET, press ‘Escape’ to return to the Main Menu. Press ‘D’ to choose (D)ownload Configuration. Press ‘D’ again to begin the download (see Figure 8). This downloads the updated configuration file (*config.csv*) from the computer to the bridge. When the download is complete, press ‘escape’ twice to return to the Main Menu.

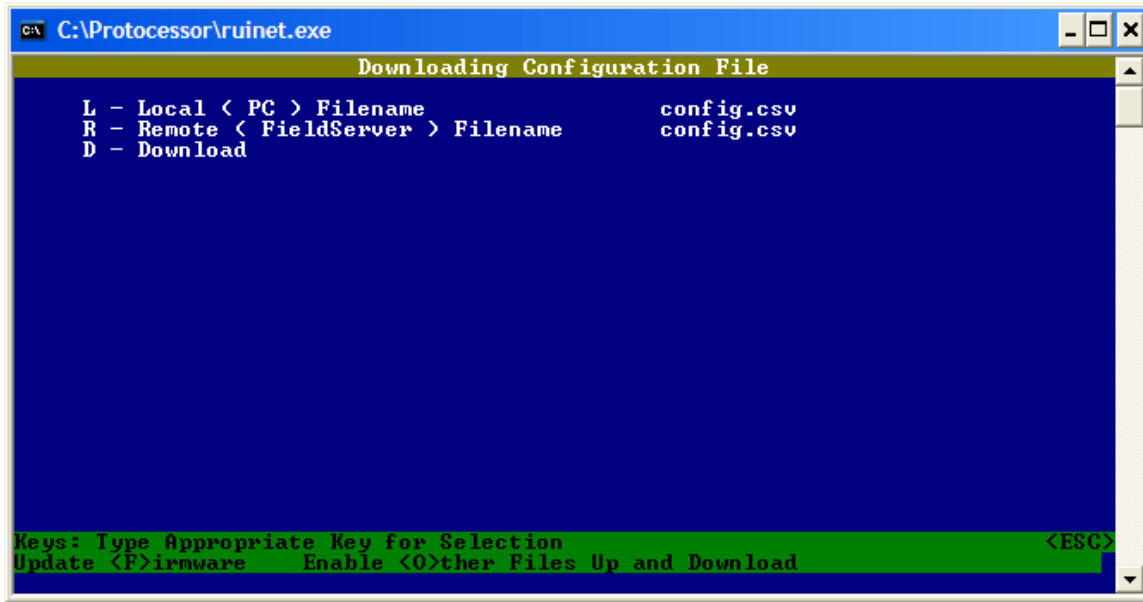


Figure 8 - RUINET Download Screen

9) Press '!' to restart the bridge. The changes are permanently saved.