

# VERSA-LINE

## Submittal

PCH Pipe Cover  
Horizontal

PCH Pipe Cover Horizontal

# Specification

### PIPE COVER:

STYLE: Horizontal  
(No Slip Joints)  
OUTLET: No Louvers, Flat Top  
Closed Bottom, Return to Wall

LENGTHS: 8'0" (Consult factory for shorter lengths)

MAT'L:  18 Ga. CRS (Std)  
 16 Ga. CRS (Opt'l)  
 14 Ga. CRS (Opt'l)  
 16 Ga. Stainless Steel (Opt'l)  
 14 Ga. Aluminum (Opt'l)

HEIGHT:  4"  
 5"  
 11"  
 17"

FINISH:  Baked Powder (Std)  
 Baked Metallic (Opt'l)

### ACCESSORIES:

All (3) sided overlapping  
Holes provided for fasteners  
2-1/2" or 4" Joiner Required Between Adjoining Pieces

### BACKPLATE:

TYPE: B610 Mounting Strip  
LENGTHS: 8'0" Only  
MAT'L:  18 Ga. Galvannealed (Std)

### AIRSEAL:

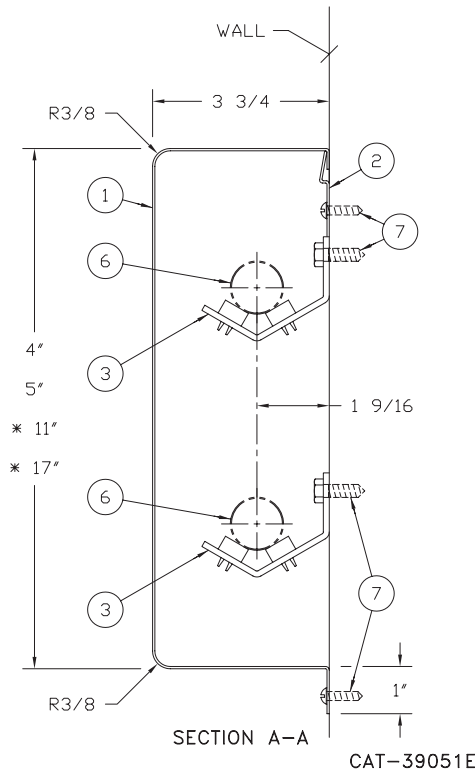
1/8" X 3/8" Closed Cell (Opt'l)  
Field Installed Only

### PIPE HANGERS:

TYPE:  RPH (Opt'l)  
MAT'L: 1/8" Galvannealed (Std)

- PCH-4
- PCH-5
- PCH-11
- PCH-17

### PCH PIPE COVER - HORIZONTAL



1. Pipe Cover
2. Hanger Strip
3. RPH
6. R/S Pipe By Others
7. Fasteners By Others



260 North Elm St., Westfield, MA 01085  
(413) 564-5535 Fax: (413) 562-8437  
www.sterlingheat.com

PROJECT: \_\_\_\_\_ DATE: \_\_\_\_\_  
LOCATION: \_\_\_\_\_  
ARCHITECT: \_\_\_\_\_  
ENGINEER: \_\_\_\_\_  
CONTRACTOR: \_\_\_\_\_  
PO NUMBER: \_\_\_\_\_

