

LINOVECTOR II

Submittal

HPC Pipe Cover
Horizontal

HPC Pipe Cover Horizontal

Specification

PIPE COVER:

- STYLE: Horizontal
(No Slip Joints)
- OUTLET: No Louvers, Flat Top
Closed Bottom, Return to Wall
- LENGTHS: 8'0" (Consult factory for
shorter lengths)
- MAT'L: 18 Ga. CRS (Std)
 16 Ga. CRS (Opt'l)
 14 Ga. CRS (Opt'l)
 16 Ga. Stainless Steel (Opt'l)
 14 Ga. Aluminum (Opt'l)
- HEIGHT: 4"
 5"
 11"
 17"
- FINISH: Baked Powder (Std)
 Baked Metallic (Opt'l)

ACCESSORIES:

- All (3) sided overlapping
Holes provided for fasteners
2-1/2" or 4" Joiner Required Between
Adjoining Pieces

BACKPLATE:

- TYPE: V610 Mounting Strip
LENGTHS: 8'0" Only
MAT'L: 18 Ga. Galvannealed (Std)

AIRSEAL:

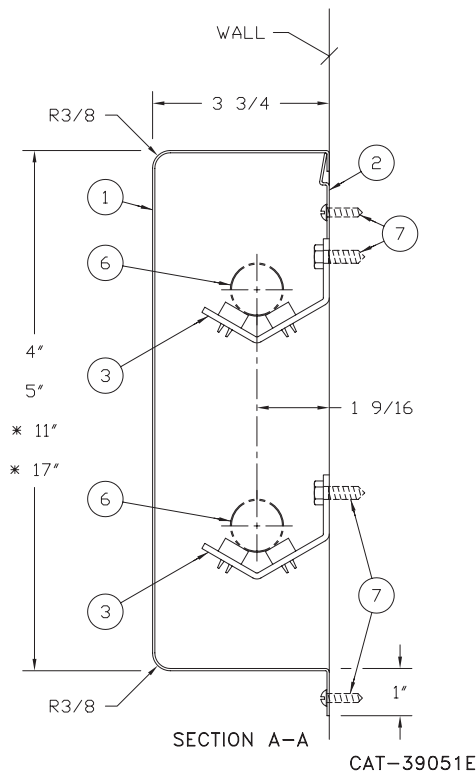
- 1/8" X 3/8" Closed Cell (Opt'l)
Field Installed Only

PIPE HANGERS:

- TYPE: RPH (Opt'l)
MAT'L: 1/8" Galvannealed (Std)

- HPC-4
 HPC-5
 HPC-11
 HPC-17

HPC PIPE COVER - HORIZONTAL



Vulcan

RADIATOR

260 North Elm St., Westfield, MA 01085
(413) 568-9571 Fax: (413) 564-5661
www.vulcanrad.com

PROJECT: _____ DATE: _____

LOCATION: _____

ARCHITECT: _____

ENGINEER: _____

CONTRACTOR: _____

PO NUMBER: _____