

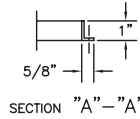
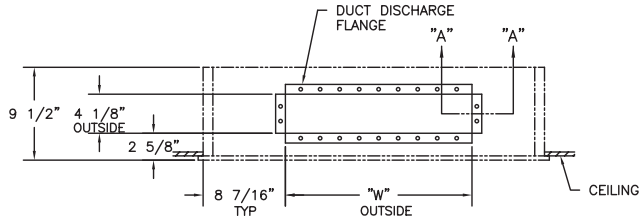
CABINET UNIT HEATER SUBMITTAL DATA

CBS-A-15

Accessories

DUCT COLLAR
INLET AND DISCHARGE

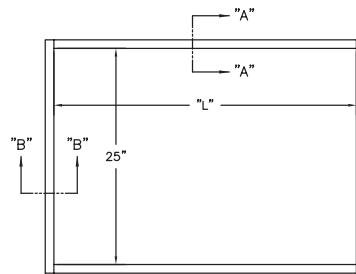
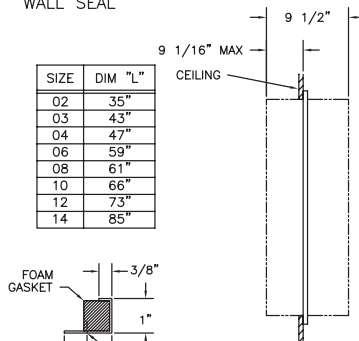
| SIZE | DIM "W" |
|------|---------|
| 02 | 18 1/8" |
| 03 | 26 1/8" |
| 04 | 30 1/8" |
| 06 | 42 1/8" |
| 08 | 44 1/8" |
| 10 | 49 1/8" |
| 12 | 56 1/8" |
| 14 | 68 1/8" |



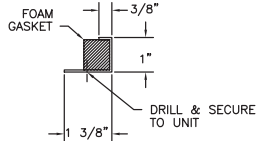
Option 114

WALL SEAL

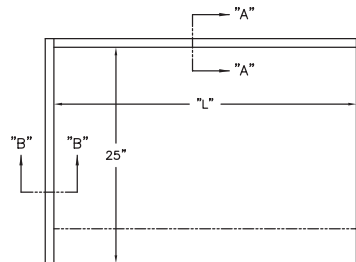
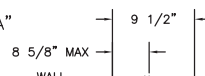
| SIZE | DIM "L" |
|------|---------|
| 02 | 35" |
| 03 | 43" |
| 04 | 47" |
| 06 | 59" |
| 08 | 61" |
| 10 | 66" |
| 12 | 73" |
| 14 | 85" |



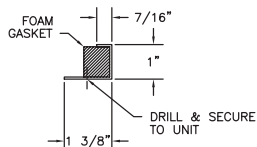
Option 126B



SECTION "A" - "A"



Option 126A



SECTION "B" - "B"

WALL SEAL 3/4"
(FOR F AND FI MODELS) IS OPTIONAL

WALL SEAL PIECES ARE ATTACHED TO UNIT
AFTER UNIT RECESS DEPTH IS DETERMINED.

CAT00206A

PROJECT: _____
 LOCATION: _____
 ARCHITECT: _____
 ENGINEER: _____
 CONTRACTOR: _____
 PO NUMBER: _____
 DATE: _____



260 North Elm St. • Westfield, MA 01085
 Tel: (413) 568-9571 • Fax (413) 564-5661
 www.vulcanrad.com

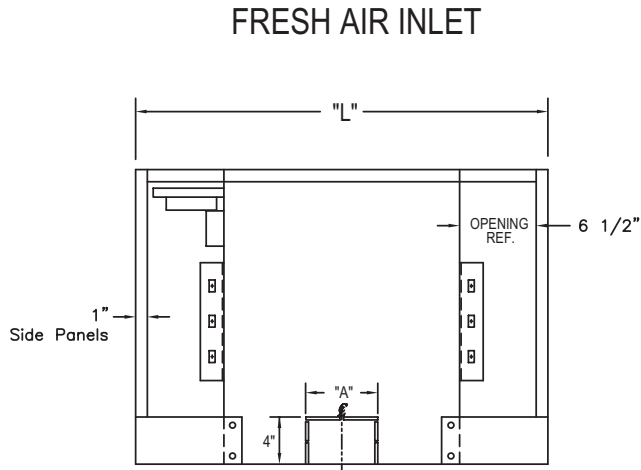


CABINET UNIT HEATER SUBMITTAL DATA

CBS-A-15

Accessories

| SIZE | DIM "A" | DIM "L" |
|------|---------|---------|
| 02 | 6 1/8" | 35" |
| 03 | 6 1/8" | 43" |
| 04 | 6 1/8" | 47" |
| 06 | 10 5/8" | 59" |
| 08 | 10 5/8" | 61" |
| 10 | 10 5/8" | 66" |
| 12 | 16 5/8" | 73" |
| 14 | 16 5/8" | 85" |



Option 118

Option 119

REAR VIEW
 FRESH AIR INLET
 OPENING IN INTERNAL CABINET
 KNOCKED OUT WHEN REQUIRED

Option 118 and 119

CAT00205B